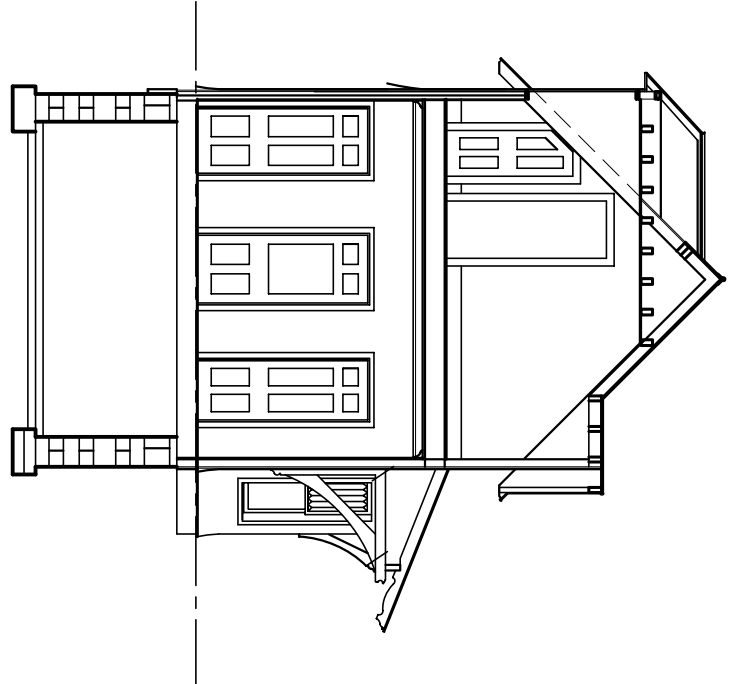
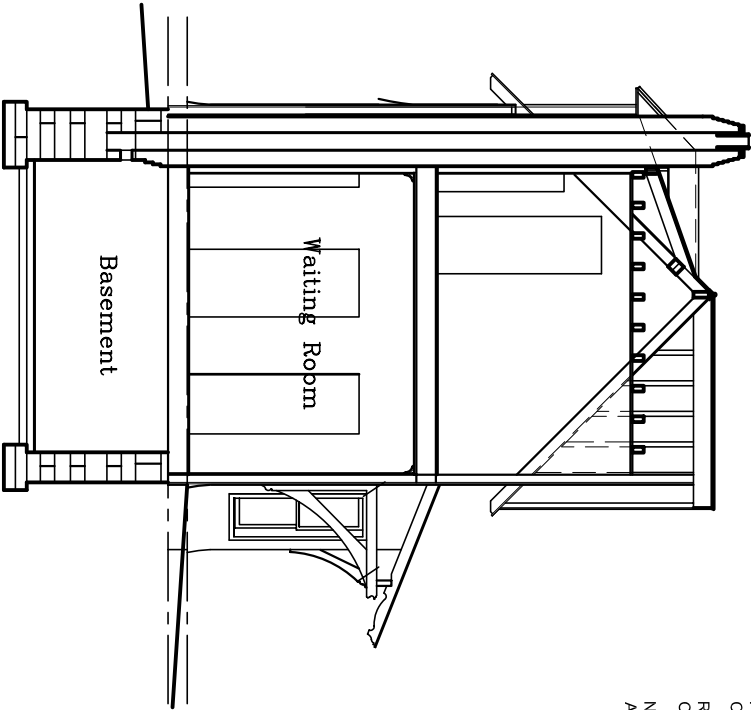


| REV. | DATE | DESCRIPTION |
|------|------|-------------|
|      |      |             |
|      |      |             |
|      |      |             |
|      |      |             |



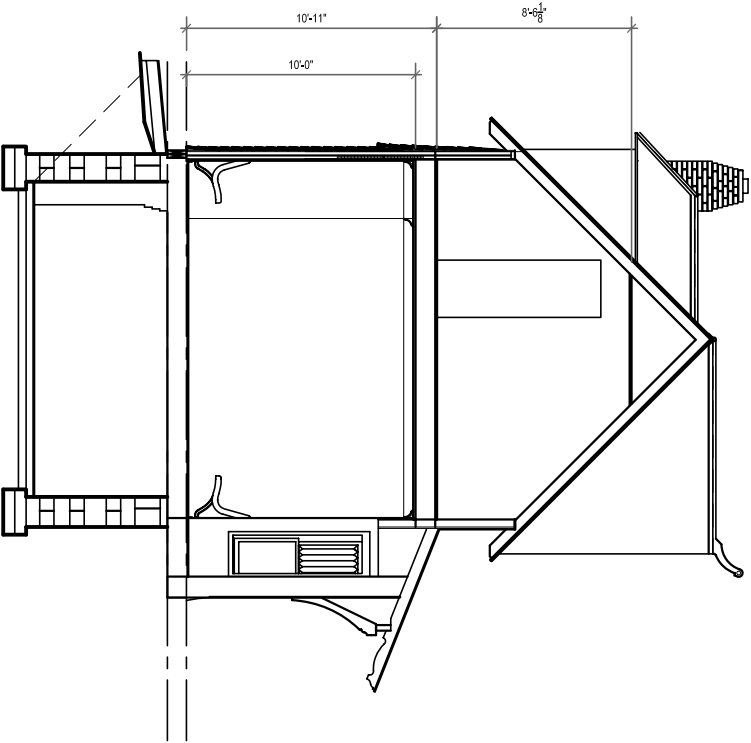
Section at Small Dormer

Scale: 1/4"=1'-0"



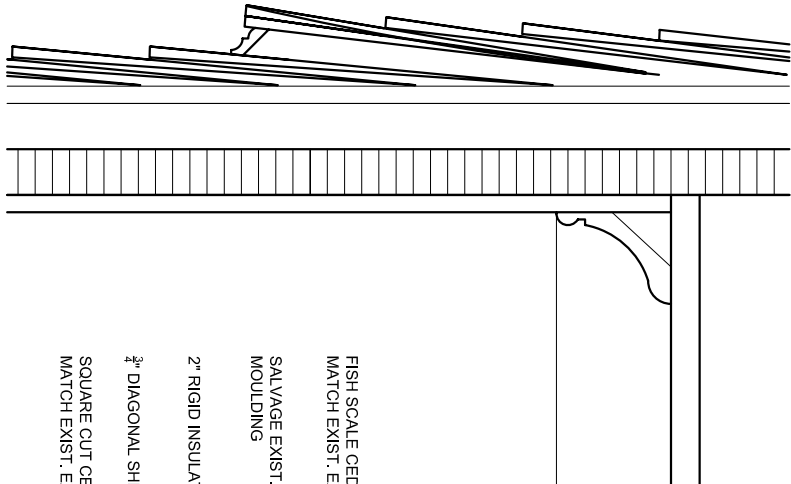
Section at Chimney

Scale: 1/4"=1'-0"



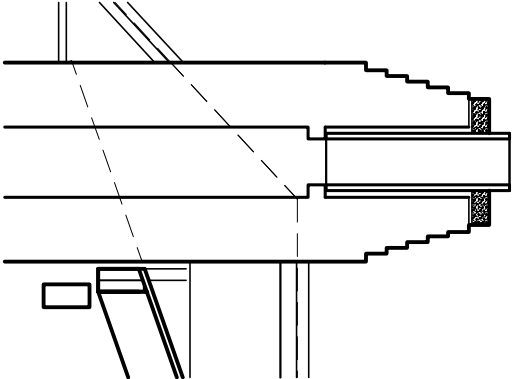
Section at Bay Window

Scale: 1/4"=1'-0"



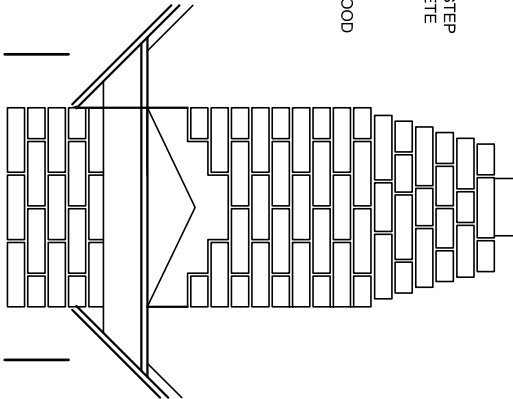
WALL SECTION

Scale: 3/8"=1'-0"



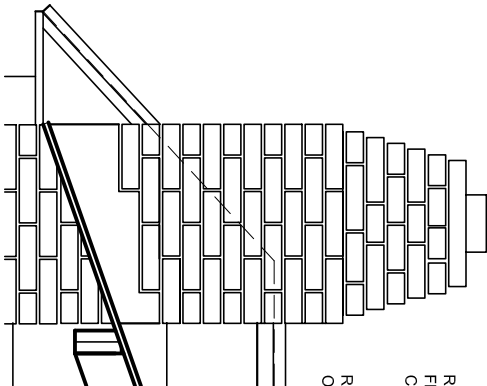
Chimney Section

Scale: 1"=1'-0"



Chimney Detail

Scale: 1"=1'-0"



Chimney Detail

Scale: 1"=1'-0"

REBUILT BRICK CHIMNEY W/ STEP FLASHING AND CAST CONCRETE CAP.  
REBUILT CRICKET W/ 3/4" PLYWOOD OVER 2 X 6 RAFTERS.  
NEW 2-2X6 HEADER - PROVIDE 1" AIR GAP AT CHIMNEY.

REBUILT BRICK CHIMNEY W/ STEP FLASHING AND CAST CONCRETE CAP.

REBUILT CRICKET W/ 3/4" PLYWOOD OVER 2 X 6 RAFTERS.

FISH SCALE CEDAR SHINGLES MATCH EXIST. EXPOSURE

SALVAGE EXIST. MOULDING

2" RIGID INSULATION

3/4" DIAGONAL SHEATHING

SQUARE CUT CEDAR SHINGLES MATCH EXIST. EXPOSURE



615 LINDEN ST.  
ANNAPOLIS, MD  
(410) 664-2822

Souhampton Railroad Station Society

Souhampton Railroad Station

Restoration

|                      |          |          |           |          |
|----------------------|----------|----------|-----------|----------|
| TITLE                |          |          |           | DWG. NO. |
| Sections and Details |          |          |           | A-3      |
| DATE                 | SCALE    | DRAWN BY | PROJ. NO. |          |
| 08/12/08             | AS NOTED | JRR      | 0601      |          |